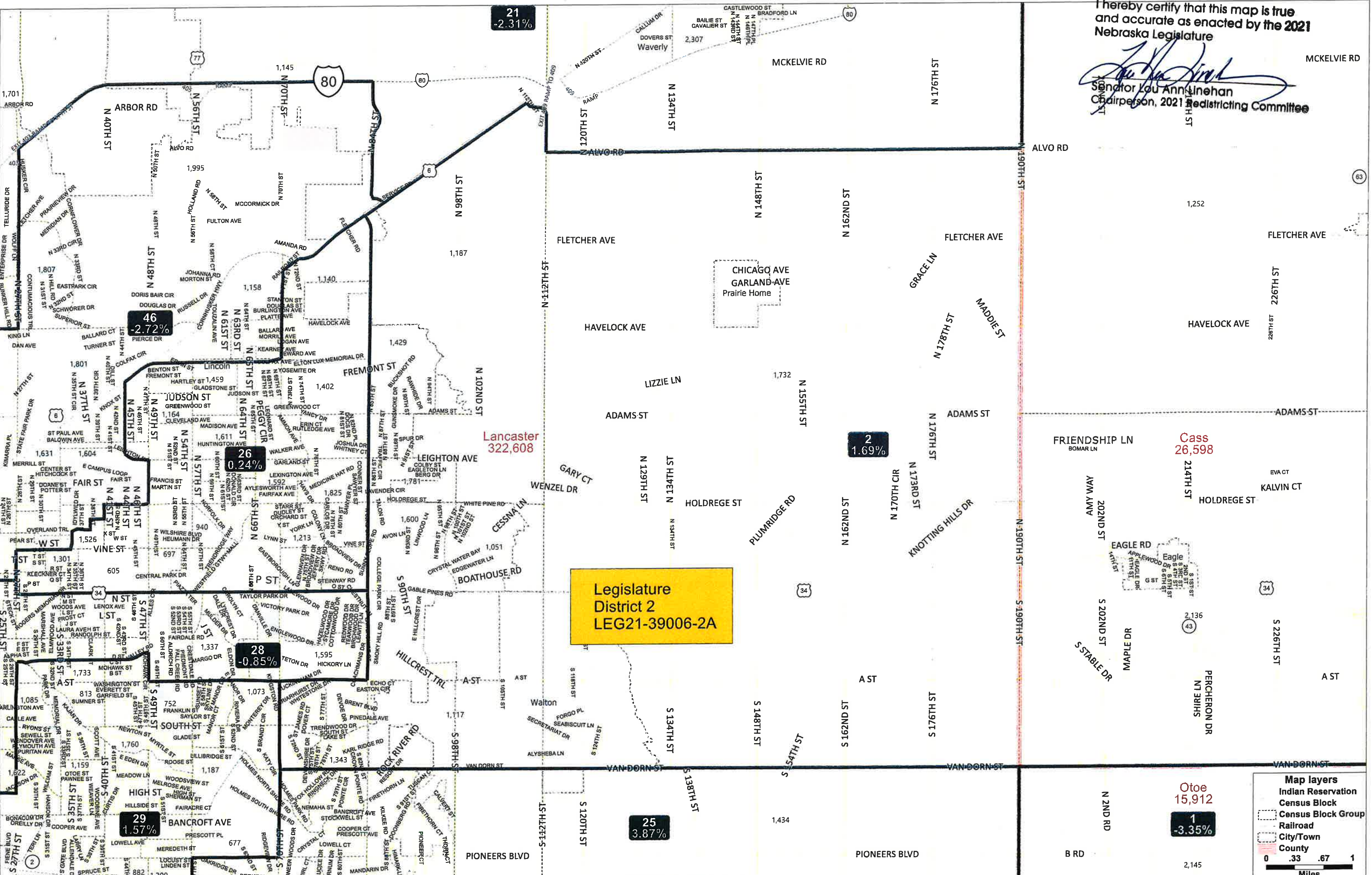


I hereby certify that this map is true and accurate as enacted by the 2021 Nebraska Legislature

*Lou Ann Linehan*  
Senator Lou Ann Linehan  
Chairperson, 2021 Redistricting Committee



21  
-2.31%

46  
-2.72%

26  
0.24%

28  
-0.85%

29  
1.57%

25  
3.87%

2  
1.69%

1  
-3.35%

Lancaster  
322,608

Cass  
26,598

Otoe  
15,912

Legislature  
District 2  
LEG21-39006-2A

**Map layers**

- Indian Reservation
- Census Block
- Census Block Group
- Railroad
- City/Town
- County

0 .33 .67 1  
Miles